



55860 Russell Industrial Parkway / Mishawaka, Indiana 46545 / 574.254.9050 / Fax 574.254.9650

### WELL & PUMP SERVICE INSPECTION REPORT

Owner Turkey Creek Regional Sewage District City Syracuse State IN

Location North of Well #1 N. 41.40995 / W. 085.66028

Well No. 2 Date Drilled 1998 Dia. 12" Depth 78' Type Well Rotary

Screen ID. 12" Screen Length 15' Depth to Top of Screen 63' Type Screen Johnson SS

Dates of Cleaning 2004

Phone (260) 856-4341 Person to Contact Tim Woodward

	DATE	STATIC	G.P.M.	PUMPING LEVEL	PRESSURE	SPECIFIC CAPACITY
ORIGINAL	1998	19.5'	302	33.08'	-	22.3
AFTER LAST CLEANING	2004	20'	252	32.5'	-	20.1
AFTER LAST TEST	2015	18.2'	250	30.8'	64#	19.8
AT PUMP'S RATED FLOW	2016	19.8'	250	34.4'	64#	17.1
AT SYSTEM OPERATING PSI	2016	19.8'	225	32.3'	74#	18.0

Test Completed Through Meter      Thread Size 4" Confined Space Entry? No

Motor HP 20 Make Franklin Volts 230 RPM 3450 Phase 3

Gear Drive None HP - Ratio - RPM Meter Required No

Pump Mfg. Grundfos Serial No. 230S200-5 Transducer Depth 68.7'

Rated Capacity: 250 GPM 198' TDH Operating Pressure     

Total Setting 74' 6" Size of Packing Sub Date Installed 1998

Dates of Overhaul 2004(column only), 2010(pump end/column)

#### THE FOLLOWING IS TO BE PERFORMED DURING EACH INSPECTION

Is Check Valve Leaking? No Change Motor Oil & Grease Sub Repack Pump Sub Grease Pump Sub

Pump is Presently Developing 250 GPM 182' TDH Projected Curve Capacity 250 GPM 182' TDH

Shut Off Pressure 127 PSI Rated Shut Off Head 320 ft. Calculated Shut Off Head 313 ft.

Electrical Data (With Pump in Operation) 237/233/236 V 47 / 47 / 54 Amps 53.8 @ 240V Full Load Amps

Location of Power Line: Underground Can Electrical Box be Locked Out? Yes

Distance From Top of Pump Pedestal to Grade 8" Materials Needed to Clean Well Pull pump, (2) hoses to tank, 40' to waste.

Need a Smeal to Raise Pump? Yes Remarks Orifice Test.

Maintenance: 4" x 2" flange, (1) fire hose, need fitting for PSI. Transducer reads column of water above transducer depth.

Inspected By Doug Gentry Date Inspected September 15, 2016



55860 Russell Industrial Parkway / Mishawaka, Indiana 46545 / 574.254.9050 / Fax 574.254.9650

### WELL & PUMP SERVICE INSPECTION REPORT

Owner Turkey Creek Regional Sewage District City Syracuse State IN

Location North of Well #1 N. 41.40995 / W. 085.66028

Well No. 2 Date Drilled 1998 Dia. 12" Depth 78' Type Well Rotary

Screen ID. 12" Screen Length 15' Depth to Top of Screen 63' Type Screen Johnson SS

Dates of Cleaning 2004

Phone (260) 856-4341 Person to Contact Tim Woodward

	DATE	STATIC	G.P.M.	PUMPING LEVEL	PRESSURE	SPECIFIC CAPACITY
ORIGINAL	1998	19.5'	302	33.08'	-	22.3
AFTER LAST CLEANING	2004	20'	252	32.5'	-	20.1
AFTER LAST TEST	2014	18.2'	251	31.6'	58#	18.7
AT PUMP'S RATED FLOW	2015	18.2'	250	30.8'	64#	19.8
AT SYSTEM OPERATING PSI	2015	18.2'	201	28'	80#	20.5

Test Completed Through Meter      Thread Size 4" Confined Space Entry? No

Motor HP 20 Make Franklin Volts 230 RPM 3450 Phase 3

Gear Drive None HP - Ratio - RPM Meter Required No

Pump Mfg. Grundfos Serial No. 230S200-5 Transducer Depth 68.7'

Rated Capacity: 250 GPM 198' TDH Operating Pressure     

Total Setting 74' 6" Size of Packing Sub Date Installed 1998

Dates of Overhaul 2004(column only), 2010(pump end/column)

#### THE FOLLOWING IS TO BE PERFORMED DURING EACH INSPECTION

Is Check Valve Leaking? No Change Motor Oil & Grease Sub Repack Pump Sub Grease Pump Sub

Pump is Presently Developing 250 GPM 179' TDH Projected Curve Capacity 250 GPM 179' TDH

Shut Off Pressure N/A PSI Rated Shut Off Head 320 ft. Calculated Shut Off Head N/A ft.

Electrical Data (With Pump in Operation) 240 V 46 / 45 / 53 Amps 53.8 @ 240V Full Load Amps

Location of Power Line: Underground Can Electrical Box be Locked Out? Yes

Distance From Top of Pump Pedestal to Grade 8" Materials Needed to Clean Well Pull pump, (2) hoses to tank, 40' to waste.

Need a Smeal to Raise Pump? Yes Remarks Orifice Test. Water Levels Taken With Probe.

Transducer has not worked properly for three years.

Maintenance: 4" x 2" flange, (1) fire hose, need fitting for PSI. Transducer reads column of water above transducer depth.

Inspected By Ryan Hampton Date Inspected December 18, 2015



55860 Russell Industrial Parkway / Mishawaka, Indiana 46545 / 574.254.9050 / Fax 574.254.9650

### WELL & PUMP SERVICE INSPECTION REPORT

Owner Turkey Creek Regional Sewage District City Syracuse State IN

Location North of Well #1

Well No. 2 Date Drilled 1998 Dia. 12" Depth 78' Type Well Rotary

Screen ID. 12" Screen Length 15' Depth to Top of Screen 63' Type Screen Johnson SS

Dates of Cleaning 2004

Phone (260) 856-4341 Person to Contact Tim Woodward

	DATE	STATIC	G.P.M.	PUMPING LEVEL	PRESSURE	SPECIFIC CAPACITY
ORIGINAL	1998	19.5'	302	33.08'	-	22.3
AFTER LAST CLEANING	2004	20'	252	32.5'	-	20.1
AFTER LAST TEST	2013	19.3'	250	32.8'	54#	18.5
AT PUMP'S RATED FLOW	2014	18.2'	251	31.6'	58#	18.7
AT SYSTEM OPERATING PSI	2014	18.2'	195	27.9'	80#	20.1

Test Completed Through Meter      Thread Size 4" Confined Space Entry? No

Motor HP 20 Make Franklin Volts 230 RPM 3450 Phase 3

Gear Drive None HP - Ratio - RPM Meter Required No

Pump Mfg. Grundfos Serial No. 230S200-5 Transducer Depth 68.7'

Rated Capacity: 250 GPM 198' TDH Operating Pressure     

Total Setting 74' 6" Size of Packing Sub Date Installed 1998

Dates of Overhaul 2004(column only), 2010(pump end/column)

#### THE FOLLOWING IS TO BE PERFORMED DURING EACH INSPECTION

Is Check Valve Leaking? No Change Motor Oil & Grease Sub Repack Pump Sub Grease Pump Sub

Pump is Presently Developing 251 GPM 166' TDH Projected Curve Capacity 250 GPM 166' TDH

Shut Off Pressure N/A PSI Rated Shut Off Head 320 ft. Calculated Shut Off Head N/A ft.

Electrical Data (With Pump in Operation 240 V 45 / 46 / 53 Amps 53.8 @ 240V Full Load Amps

Location of Power Line: Underground Can Electrical Box be Locked Out?     

Distance From Top of Pump Pedestal to Grade      Materials Needed to Clean Well Pull pump, (2) hoses to tank, 40' to waste.

Need a Smeal to Raise Pump? Yes Remarks Repaired Leak at Pitless with (1) 4" Thread x Socket

Schedule 80, (1) 4" Dresser Coupling TRANSDUCER HAS NOT BEEN WORKING FOR 2 YEARS

Maintenance: 4" x 2" flange, (1) fire hose, need fitting for PSI. Transducer reads column of water above transducer depth.

Inspected By John Kollar Date Inspected July 1, 2014



55860 Russell Industrial Parkway / Mishawaka, Indiana 46545 / 574.254.9050 / Fax 574.254.9650

### WELL & PUMP SERVICE INSPECTION REPORT

Owner Turkey Creek Regional Sewage District City Syracuse State IN

Location North of Well #1

Well No. 2 Date Drilled 1998 Dia. 12" Depth 78' Type Well Rotary

Screen ID. 12" Screen Length 15' Depth to Top of Screen 63' Type Screen Johnson SS

Dates of Cleaning 2004

Phone (260) 856-4341 Person to Contact Tim Woodward

	DATE	STATIC	G.P.M.	PUMPING LEVEL	PRESSURE	SPECIFIC CAPACITY
ORIGINAL	1998	19.5'	302	33.08'	-	22.3
AFTER LAST CLEANING	2004	20'	252	32.5'	-	20.1
AFTER LAST TEST	2012	23.4'	243	36.1'	58#	19.1
AT PUMP'S RATED FLOW	2013	19.3'	250	32.8'	54#	18.5
AT SYSTEM OPERATING PSI	2013	19.3'	177	29.1'	82#	18.1

Test Completed Through Meter No Thread Size 4" Confined Space Entry? No

Motor HP 20 Make Franklin Volts 230 RPM 3450 Phase 3

Gear Drive None HP - Ratio - RPM Meter Required No

Pump Mfg. Grundfos Serial No. 230S200-5 Transducer Depth 68.7'

Rated Capacity: 250 GPM 198' TDH Operating Pressure \_\_\_\_\_

Total Setting 74' 6" Size of Packing Sub Date Installed 1998

Dates of Overhaul 2004(column only), 2010(pump end/column)

#### THE FOLLOWING IS TO BE PERFORMED DURING EACH INSPECTION

Is Check Valve Leaking? No Change Motor Oil & Grease Sub Repack Pump Sub Grease Pump Sub

Pump is Presently Developing 250 GPM 158' TDH Projected Curve Capacity 250 GPM 158' TDH

Shut Off Pressure 124 PSI Rated Shut Off Head 320 ft. Calculated Shut Off Head 306 ft.

Electrical Data (With Pump in Operation) 240 V 46 / 46 / 54 Amps 53.8 @ 240V Full Load Amps

Location of Power Line: Underground Can Electrical Box be Locked Out? \_\_\_\_\_

Distance From Top of Pump Pedestal to Grade \_\_\_\_\_ Materials Needed to Clean Well Pull pump, (2) hoses to tank, 40' to waste.

Need a Smeal to Raise Pump? Yes Remarks Orifice test with 6" x 3" plate. Transducer not working at this time, used probe.

Maintenance: 4" x 2" flange, (1) fire hose, need fitting for PSI. Transducer reads column of water above transducer depth.

Inspected By John Kollar Date Inspected August 5, 2013



55860 Russell Industrial Parkway / Mishawaka, Indiana 46545 / 574.254.9050 / Fax 574.254.9650

### WELL & PUMP SERVICE INSPECTION REPORT

Owner Turkey Creek Regional Sewage District City Syracuse State IN

Location North of Well #1

Well No. 2 Date Drilled 1998 Dia. 12" Depth 78' Type Well Rotary

Screen ID. 12" Screen Length 15' Depth to Top of Screen 63' Type Screen Johnson SS

Dates of Cleaning 2004

Phone (260) 856-4341 Person to Contact Tim Woodward

	DATE	STATIC	G.P.M.	PUMPING LEVEL	PRESSURE	SPECIFIC CAPACITY
ORIGINAL	1998	19.5'	302	33.08'	-	22.3
AFTER LAST CLEANING	2004	20'	252	32.5'	-	20.1
AFTER LAST TEST	2011	21.29'	251	31.35'	58#	24.9
AT PUMP'S RATED FLOW	2012	23.4'	243	36.1'	58#	19.1
AT SYSTEM OPERATING PSI	2012	23.4'	180	32.2'	80#	20.4

Test Completed Through Meter      Thread Size 4" Confined Space Entry? No

Motor HP 20 Make Franklin Volts 230 RPM 3450 Phase 3

Gear Drive None HP - Ratio - RPM Meter Required No

Pump Mfg. Grundfos Serial No. 230S200-5 Transducer Depth 68.7'

Rated Capacity: 250 GPM 198' TDH Operating Pressure     

Total Setting 74' 6" Size of Packing Sub Date Installed 1998

Dates of Overhaul 2004(column only), 2010(pump end/column)

#### THE FOLLOWING IS TO BE PERFORMED DURING EACH INSPECTION

Is Check Valve Leaking? No Change Motor Oil & Grease Sub Repack Pump Sub Grease Pump Sub

Pump is Presently Developing 243 GPM 170' TDH Projected Curve Capacity 250 GPM 164' TDH

Shut Off Pressure 122 PSI Rated Shut Off Head 320 ft. Calculated Shut Off Head 305 ft.

Electrical Data (With Pump in Operation 240 V 47 / 44 / 54 Amps 53.8 @ 240V Full Load Amps

Location of Power Line: Underground Can Electrical Box be Locked Out?     

Distance From Top of Pump Pedestal to Grad      Materials Needed to Clean Well Pull pump, (2) hoses

to tank, 40' to waste.

Need a Smeal to Raise Pump? Yes Remarks Orifice test with 6"x3" plate.

Maintenance: 4" x 2" flange, (1) fire hose, need fitting for PSI. Transducer reads column of water above

transducer depth.

Inspected By John Kollar Date Inspected August 17, 2012



55860 Russell Industrial Parkway / Mishawaka, Indiana 46545 / 574.254.9050 / Fax 574.254.9650

### WELL & PUMP SERVICE INSPECTION REPORT

Owner Turkey Creek Regional Sewage District City Syracuse State IN

Location North of Well #1

Well No. 2 Date Drilled 1998 Dia. 12" Depth 78' Type Well Rotary

Screen ID. 12" Screen Length 15' Depth to Top of Screen 63' Type Screen Johnson SS

Dates of Cleaning 2004

Phone (260) 856-4341 Person to Contact Tim Woodward

	DATE	STATIC	G.P.M.	PUMPING LEVEL	PRESSURE	SPECIFIC CAPACITY
ORIGINAL	1998	19.5'	302	33.08'	-	22.3
AFTER LAST CLEANING	2004	20'	252	32.5'	-	20.1
AFTER LAST TEST	2010	27.4'	280	43'	62#	18.0
AT PUMP'S RATED FLOW	2011	21.29'	251	31.35'	58#	24.9
AT SYSTEM OPERATING PSI	2011	21.29'	195	28.87'	80#	25.7

Test Completed Through Meter      Thread Size 4" Confined Space Entry? No

Motor HP 20 Make Franklin Volts 230 RPM 3450 Phase 3

Gear Drive None HP - Ratio - RPM Meter Required No

Pump Mfg. Grundfos Serial No. 230S200-5 Transducer Depth 68.7'

Rated Capacity: 250 GPM 198' TDH Operating Pressure     

Total Setting 74' 6" Size of Packing Sub Date Installed 1998

Dates of Overhaul 2004(column only), 2010(pump end/column)

#### THE FOLLOWING IS TO BE PERFORMED DURING EACH INSPECTION

Is Check Valve Leaking? No Change Motor Oil & Grease Sub Repack Pump Sub Grease Pump Sub

Pump is Presently Developing 251 GPM 165' TDH Projected Curve Capacity 250 GPM 166' TDH

Shut Off Pressure 126 PSI Rated Shut Off Head 320 ft. Calculated Shut Off Head 312 ft.

Electrical Data (With Pump in Operation 240 V 43 / 42 / 50 Amps 53.8 @ 240V Full Load Amps

Location of Power Line: Underground Can Electrical Box be Locked Out?     

Distance From Top of Pump Pedestal to Grad:      Materials Needed to Clean Well Pull pump, (2) hoses to tank, 40' to waste.

Need a Smeal to Raise Pump? Yes Remarks Orifice test with 6"x3" plate.

Maintenance: 4" x 2" flange, (1) fire hose, need fitting for PSI. Transducer reads column of water above transducer depth.

Inspected By John Kollar Date Inspected July 7, 2011



# Peerless Midwest Inc. *Water Supply Contractors*

55860 Russell Industrial Parkway / Mishawaka, IN 46545 / 574-254-9050 / Fax 574-254-9650

## WELL & PUMP SERVICE INSPECTION REPORT

Owner Turkey Creek Regional Sewage District City Syracuse State IN

Location North of Well #1

Well No. 2 Date Drilled 1998 Dia. 12" Depth 78' Type Well Rotary

Screen ID. 12" Screen Length 15' Depth to Top of Screen 63' Type Screen Johnson SS

Dates of Cleaning 2004

Phone (260) 856-4341 Person to Contact Tim Woodward

	DATE	STATIC	G.P.M.	PUMPING LEVEL	PRESSURE	SPECIFIC CAPACITY
ORIGINAL	1998	19.5'	302	33.08'		22.3
AFTER LAST CLEANING	2004	20'	252	32.5'		20.1
AFTER LAST TEST	2009	17.05'	252	28.85'	42#	21.4
PRESENT AT LINE PRESSURE	2010	27.5'	250	40.7'	40#	18.9
	<i>2010</i>	<i>27.4'</i>	<i>280</i>	<i>43'</i>	<i>62#</i>	<i>18.0</i>

Test Completed Through Meter No Thread Size 4" Confined Space Entry? No

Motor HP 20 Make Franklin Volts 230 RPM 3450 Phase 3

Gear Drive None HP - Ratio - RPM Meter Required No

Pump Mfg. Crown brand Serial No. model # 230S 200-5 Transducer Depth 68.7'

Rated Capacity: 250 GPM 133' TDH Operating Pressure 50#-70#

Total Setting 82' 74" 6" Size of Packing Sub Date Installed 1998

Dates of Overhaul 2004 (column only), 2010 (pump over (column))

### THE FOLLOWING IS TO BE PERFORMED DURING EACH INSPECTION

Is Check Valve Leaking? No Change Motor Oil & Grease Sub Repack Pump Sub Grease Pump Sub

Pump is Presently Developing 250 GPM 133' TDH Projected Curve Capacity 252 GPM 132' TDH

Shut Off Pressure 88 PSI Rated Shut Off Head 220 320 ft. Calculated Shut Off Head 220 ft.

Electrical Data (With Pump in Operation): NDC V ndc / ndc / ndc Amps 53.8 @ 240V Full Load Amps

Location of Power Lines Underground Can Electrical Box be Locked Out?

Distance From Top of Pump Pedestal to Grade  Materials Needed to Clean Well Pull pump, (2) hoses to tank, 40' to waste.

Need a Smeal to Raise Pump? Yes Remarks Static level down due to irrigation pumps running.

Pump would not build enough pressure to shut off.

Maintenance: 4" x 2" flange, (1) fire hose, fitting for PSI. Transducer reads column of water above transducer depth.

Inspected By Gary Wickizer Date Inspected July 8, 2010



# Peerless Midwest Inc. *Water Supply Contractors*

55860 Russell Industrial Parkway / Mishawaka, IN 46545 / 574-254-9050 / Fax 574-254-9650

## WELL & PUMP SERVICE INSPECTION REPORT

Owner Turkey Creek Regional Sewage District City Syracuse State IN

Location North of Well #1

Well No. 2 Date Drilled 1998 Dia. 12" Depth 78' Type Well Rotary

Screen ID. 12" Screen Length 15' Depth to Top of Screen 63' Type Screen Johnson SS

Dates of Cleaning 2004

Phone (260) 856-4341 Person to Contact Tim Woodward

	DATE	STATIC	G.P.M.	PUMPING LEVEL	PRESSURE	SPECIFIC CAPACITY
ORIGINAL	1998	19.5'	302	33.08'		22.3
AFTER LAST CLEANING	2004	20'	252	32.5'		20.1
AFTER LAST TEST	2008	16.4'	252	29.8'	45#	18.8
PRESENT AT LINE PRESSURE	2009	17.05'	252	28.85'	42#	21.4

Test Completed Through Meter      Thread Size 4" Confined Space Entry? No

Motor HP 20 Make Franklin Volts 230 RPM 3450 Phase 3

Gear Drive - HP - Ratio - RPM Meter Required No

Pump Mfg. Crown Serial No.      Transducer Depth 68.7'

Rated Capacity: 252 GPM 180' TDH Operating Pressure     

Total Setting 62' Size of Packing Sub Date Installed 1998

Dates of Overhaul 2004(column only)

### THE FOLLOWING IS TO BE PERFORMED DURING EACH INSPECTION

Is Check Valve Leaking? no Change Motor Oil & Grease Sub Repack Pump Sub Grease Pump Sub

Pump is Presently Developing 252 GPM 126 TDH Projected Curve Capacity 252 GPM 126 TDH

Shut Off Pressure 88 PSI Rated Shut Off Head 220 ft. Calculated Shut Off Head 220 ft.

Electrical Data (With Pump in Operation): 240 V 43 / 43 / 51 Amps 53.8 @ 240V Full Load Amps

Location of Power Lines Underground Can Electrical Box be Locked Out?     

Distance From Top of Pump Pedestal to Grade      Materials Needed to Clean Well Pull pump, (2) hoses to tank, 40' to waste.

Need a Smeal to Raise Pump? Yes Remarks     

For Maintenance: Need 4" x 2" flange and (1) fire hose, need fitting for PSI. Transducer reads column of water above transducer depth.

Inspected By John Kollar / Chad Plummer Date Inspected 6/22/2009





# Peerless Midwest Inc. *Water Supply Contractors*

55860 Russell Industrial Parkway / Mishawaka, IN 46545 / 574-254-9050 / Fax 574-254-9650

## WELL & PUMP SERVICE INSPECTION REPORT

Owner Turkey Creek Regional Sewage District City Syracuse State IN

Location North of Well #1

Well No. 2 Date Drilled 1998 Dia. 12" Depth 78' Type Well Rotary

Screen ID. 12" Screen Length 15' Depth to Top of Screen 63' Type Screen Johnson SS

Dates of Cleaning 2004

Phone (260) 856-4341 Person to Contact Tim Woodward

	DATE	STATIC	G.P.M.	PUMPING LEVEL	PRESSURE	SPECIFIC CAPACITY
ORIGINAL	1998	19.5'	302	33.08'		22.3
AFTER LAST CLEANING	2004	20'	252	32.5'		20.1
AFTER LAST TEST	2007	18.6'	252	31.8'	40#	19
PRESENT AT LINE PRESSURE	2008	16.4'	252	29.8'	45#	18.8

Test Completed Through Meter      Thread Size 4" Confined Space Entry? No

Motor HP 20 Make Franklin Volts 230 RPM 3450 Phase 3

Gear Drive - HP - Ratio - RPM Meter Required No

Pump Mfg. Crown Serial No.      Transducer Depth 68.7'

Rated Capacity: 252 GPM 180' TDH Operating Pressure     

Total Setting 62' Size of Packing Sub Date Installed 1998

Dates of Overhaul 2004(column only)

### THE FOLLOWING IS TO BE PERFORMED DURING EACH INSPECTION

Is Check Valve Leaking? No Change Motor Oil & Grease Sub Repack Pump Sub Grease Pump Sub

Pump is Presently Developing 252 GPM 134' TDH Projected Curve Capacity 252 GPM 134' TDH

Shut Off Pressure 88# PSI Rated Shut Off Head 220 ft. Calculated Shut Off Head 220 ft.

Electrical Data (With Pump in Operation): 240 V 44 / 43 / 51 Amps 53.8 @ 240V Full Load Amps

Location of Power Lines Underground Can Electrical Box be Locked Out?     

Distance From Top of Pump Pedestal to Grade      Materials Needed to Clean Well Pull pump, (2) hoses to tank, 40' to waste.

Need a Smeal to Raise Pump? Yes Remarks Orifice test. 52.3/38.9 - transducer reads backwards.

For Maintenance: Need 4" x 2" flange and (1) fire hose, need fitting for PSI. Transducer reads column of water above transducer depth.

Inspected By J Kollar Date Inspected 6/16/2008



# Peerless Midwest Inc. *Water Supply Contractors*

55860 Russell Industrial Parkway / Mishawaka, IN 46545 / 574-254-9050 / Fax 574-254-9650

## WELL & PUMP SERVICE INSPECTION REPORT

Owner Turkey Creek Regional Sewage District City Syracuse State IN

Location North of Well #1

Well No. 2 Date Drilled 1998 Dia. 12" Depth 78' Type Well Rotary

Screen ID. 12" Screen Length 15' Depth to Top of Screen 63' Type Screen Johnson SS

Dates of Cleaning 2004

Phone (260) 856-4341 Person to Contact Tim Woodward

	DATE	STATIC	G.P.M.	PUMPING LEVEL	PRESSURE	SPECIFIC CAPACITY
ORIGINAL	1998	19.5'	302	33.08'		22.3
AFTER LAST CLEANING	2004	20'	252	32.5'		20.1
AFTER LAST TEST	2006	21.9'	252	34.2'	45#	20.4
PRESENT AT LINE PRESSURE	2007	18.6'	252	31.8'	40#	19

Test Completed Through Meter      Thread Size 4" Confined Space Entry? No

Motor HP 20 Make Franklin Volts 230 RPM 3450 Phase 3

Gear Drive - HP - Ratio - RPM Meter Required No

Pump Mfg. Crown Serial No.      Transducer Depth 68.7'

Rated Capacity: 252 GPM 180' TDH Operating Pressure     

Total Setting 62' Size of Packing Sub Date Installed 1998

Dates of Overhaul 2004(column only)

### THE FOLLOWING IS TO BE PERFORMED DURING EACH INSPECTION

Is Check Valve Leaking? No Change Motor Oil & Grease Sub Repack Pump Sub Grease Pump Sub

Pump is Presently Developing 252 GPM 124' TDH Projected Curve Capacity 252 GPM 124' TDH

Shut Off Pressure 88 PSI Rated Shut Off Head 220 ft. Calculated Shut Off Head 222 ft.

Electrical Data (With Pump in Operation): 240 V 43 / 42 / 54 Amps 53.8 @ 240V Full Load Amps

Location of Power Lines Underground Can Electrical Box be Locked Out?     

Distance From Top of Pump Pedestal to Grade      Materials Needed to Clean Well Pull pump, (2) hoses to tank, 40' to waste.

Need a Smeal to Raise Pump? Yes Remarks Static = 50.02' of water column above transducer.

Pumping level = 36.95' of water column above transducer. Well 1 cycled on and off during this test.

For Maintenance: Need 4" x 2" flange and (1) fire hose, need fitting for PSI. Transducer reads column of water above transducer depth.

Inspected By Mike Sowers Date Inspected October 17, 2007



# Peerless Midwest Inc. Water Supply Contractors

55860 Russell Industrial Parkway / Mishawaka, IN 46545 / 574-254-9050 / Fax 574-254-9650

## WELL & PUMP SERVICE INSPECTION REPORT

Owner Turkey Creek Regional Sewage District City Syracuse State IN

Location North of Well #1

Well No. 2 Date Drilled 1998 Dia. 12" Depth 78' Type Well Rotary

Screen ID. 12" Screen Length 15' Depth to Top of Screen 63' Type Screen Johnson SS

Dates of Cleaning 2004

Phone (260) 856-4341 Person to Contact Tim Woodward

	DATE	STATIC	G.P.M.	PUMPING LEVEL	PRESSURE	SPECIFIC CAPACITY
ORIGINAL	1998	19.5'	302	33.08'		22.3
AFTER LAST CLEANING	2004	20'	252	32.5'		20.1
AFTER LAST TEST	2006	21.9'	252	34.2'	45#	20.4
PRESENT AT LINE PRESSURE	2007	29'	252	Probe 44.7'	41#	16.0

Test Completed Through Meter      Thread Size 4" Confined Space Entry? No

Motor HP 20 Make Franklin Volts 230 RPM 3450 Phase 3

Gear Drive - HP - Ratio - RPM Meter Required No

Pump Mfg. Crown Serial No.      Airline Length None

Rated Capacity: 252 GPM 180' TDH Operating Pressure     

Total Setting 62' Size of Packing Sub Date Installed 1998

Dates of Overhaul 2004(column only)

### THE FOLLOWING IS TO BE PERFORMED DURING EACH INSPECTION

Is Check Valve Leaking? No Change Motor Oil & Grease Sub Repack Pump Sub Grease Pump Sub

Pump is Presently Developing 252 GPM 139' TDH Projected Curve Capacity 252 GPM 139' TDH

Shut Off Pressure 88 PSI Rated Shut Off Head 220 ft. Calculated Shut Off Head 232' ft.

Electrical Data (With Pump in Operation): 240 V 41 / 45 / 51 Amps 53.8 @ 240V Full Load Amps

Location of Power Lines Underground Can Electrical Box be Locked Out?     

Distance From Top of Pump Pedestal to Grade      Materials Needed to Clean Well Pull pump, (2) hoses to tank, 40' to waste.

Need a Smeal to Raise Pump? Yes Remarks #1 was running while testing. All surrounding irrigation wells were in operation during this test. This was an orifice test.

For Maintenance: Need 4" x 2" flange and (1) fire hose, need fitting for PSI.

Inspected By John Kollar Date Inspected July 13, 2007



# Peerless Midwest Inc. *Water Supply Contractors*

55860 Russell Industrial Parkway / Mishawaka, IN 46545 / 574-254-9050 / Fax 574-254-9650

## WELL & PUMP SERVICE INSPECTION REPORT

Owner Turkey Creek Regional Sewage District City Syracuse State IN

Location North of Well #1

Well No. 2 Date Drilled 1998 Dia. 12" Depth 78' Type Well Rotary

Screen ID. 12" Screen Length 15' Depth to Top of Screen 63' Type Screen Johnson SS

Dates of Cleaning 2004

Phone (260) 856-4341 Person to Contact Val Duggins, Supt./Tim Woodward, Asst. Supt.

	DATE	STATIC	G.P.M.	PUMPING LEVEL	PRESSURE	SPECIFIC CAPACITY
ORIGINAL	1998	19.5'	302	33.08'		22.3
AFTER LAST CLEANING	2004	20'	252	32.5'		20.1
AFTER LAST TEST	2005	18.2'	252	31.5'	42#	18.9
PRESENT AT LINE PRESSURE	2006	21.9'	252	34.2'	45#	20.4

Test Completed Through Meter      Thread Size 4" Confined Space Entry? No

Motor HP 20 Make Franklin Volts 230 RPM 3450 Phase 3

Gear Drive - HP - Ratio - RPM Meter Required No

Pump Mfg. Crown Serial No.                      Airline Length None

Rated Capacity: 252 GPM 180' TDH Operating Pressure                     

Total Setting 62' Size of Packing Sub Date Installed 1998

Dates of Overhaul 2004(column only)

### THE FOLLOWING IS TO BE PERFORMED DURING EACH INSPECTION

Is Check Valve Leaking? No Change Motor Oil & Grease Sub Repack Pump Sub Grease Pump Sub

Pump is Presently Developing 252 GPM 138' TDH Projected Curve Capacity 252 GPM 138' TDH

Shut Off Pressure 88 PSI Rated Shut Off Head 220 ft. Calculated Shut Off Head 225' ft.

Electrical Data (With Pump in Operation): 240 V 42 / 45 / 49 Amps 53.8 @ 240V Full Load Amps

Location of Power Lines Underground Can Electrical Box be Locked Out?                     

Distance From Top of Pump Pedestal to Grade                      Materials Needed to Clean Well Pull pump, (2) hoses to tank, 40' to waste.

Need a Smeal to Raise Pump? Yes Remarks Transducer not working - used probe.

For Maintenance: Need 4" x 2" flange and (1) fire hose, need fittingsf or PSI.

Inspected By John Kollar Date Inspected August 23, 2006



# Peerless Midwest Inc. *Water Supply Contractors*

55860 Russell Industrial Parkway / Mishawaka, IN 46545 / 574-254-9050 / Fax 574-254-9650

## WELL & PUMP SERVICE INSPECTION REPORT

Owner Turkey Creek Regional Sewage District City Syracuse State IN

Location North of Well #1

Well No. 2 Date Drilled 1998 Dia. 12" Depth 78' Type Well Rotary

Screen ID. 12" Screen Length 15' Depth to Top of Screen 63' Type Screen Johnson SS

Dates of Cleaning 2004

Phone (260) 856-4341 Person to Contact Val Duggins, Supt./Tim Woodward, Asst. Supt.

	DATE	STATIC	G.P.M.	PUMPING LEVEL	PRESSURE	SPECIFIC CAPACITY
ORIGINAL	1998	19.5'	302	33.08'		22.3
AFTER LAST CLEANING	2004	20'	252	32.5'		20.1
AFTER LAST TEST	2004	17.4'	252	30.4'	42#	19.4
PRESENT AT LINE PRESSURE	2005	18.2'	252	31.5'	42#	18.9

Test Completed Through Meter      Thread Size 4" Confined Space Entry? No

Motor HP 20 Make Franklin Volts 230 RPM 3450 Phase 3

Gear Drive - HP - Ratio - RPM Meter Required No

Pump Mfg. Crown Serial No.      Airline Length None

Rated Capacity: 252 GPM 180' TDH Operating Pressure     

Total Setting 62' Size of Packing Sub Date Installed 1998

Dates of Overhaul 2004(column only)

### THE FOLLOWING IS TO BE PERFORMED DURING EACH INSPECTION

Is Check Valve Leaking? No Change Motor Oil & Grease Sub Repack Pump Sub Grease Pump Sub

Pump is Presently Developing 252 GPM 129' TDH Projected Curve Capacity 252 GPM 129' TDH

Shut Off Pressure 98 PSI Rated Shut Off Head 220 ft. Calculated Shut Off Head 245 ft.

Electrical Data (With Pump in Operation): 240 V 43 / 47 / 48 Amps 53.8 @ 240V Full Load Amps

Location of Power Lines Underground Can Electrical Box be Locked Out?     

Distance From Top of Pump Pedestal to Grade      Materials Needed to Clean Well Pull pump, (2) hoses to tank, 40' to waste.

Need a Smeal to Raise Pump? Yes Remarks     

For Maintenance: Need 4" x 2" flange and (1) fire hose.

Inspected By Ron Mead

Date Inspected September 6, 2005



# Peerless Midwest Inc. *Water Supply Contractors*

55860 Russell Industrial Parkway / Mishawaka, IN 46545 / 574-254-9050 / Fax 574-254-9650

## WELL & PUMP SERVICE INSPECTION REPORT

Owner Turkey Creek Regional Sewage District City Syracuse State IN

Location North of Well #1

Well No. 2 Date Drilled 1998 Dia. 12" Depth 78' Type Well Rotary

Screen ID. 12" Screen Length 15' Depth to Top of Screen 63' Type Screen Johnson SS

Dates of Cleaning 04

Phone (260) 856-4341 Person to Contact Val Duggins, Supt./Tim Woodward, Asst. Supt.

	DATE	STATIC	G.P.M.	PUMPING LEVEL	PRESSURE	SPECIFIC CAPACITY
ORIGINAL	1998	19.5'	302	33.08'		22.3
AFTER LAST CLEANING	<u>2004</u>	<u>20'</u>	<u>252</u>	<u>32.5'</u>		<u>20.1</u>
AFTER LAST TEST	2003	17.9'	294	31.7'	40#	21.3
PRESENT AT LINE PRESSURE	2004	17.4'	252	30.4'	42#	19.4

Test Completed Through Meter      Thread Size 4" Confined Space Entry? No

Motor HP 20 Make Franklin Volts 230 RPM 3450 Phase 3

Gear Drive - HP - Ratio - RPM Meter Required No

Pump Mfg. Crown Serial No.      Airline Length None

Rated Capacity: 252 GPM 180' TDH Operating Pressure     

Total Setting 62' Size of Packing Sub Date Installed 1998

Dates of Overhaul 04 (Column Only)

### THE FOLLOWING IS TO BE PERFORMED DURING EACH INSPECTION

Is Check Valve Leaking? No Change Motor Oil & Grease Sub Repack Pump Sub Grease Pump Sub

Pump is Presently Developing 252 GPM 127' TDH Projected Curve Capacity 252 GPM 127' TDH

Shut Off Pressure 90 PSI Rated Shut Off Head 220 ft. Calculated Shut Off Head 225 ft.

Electrical Data (With Pump in Operation): 240 V 45.3 / 43.8 / 47 Amps 53.8 @ 240V Full Load Amps

Location of Power Lines Underground Can Electrical Box be Locked Out?     

Distance From Top of Pump Pedestal to Grade      Materials Needed to Clean Well Pull pump, (2) hoses to tank, 40' to waste.

Need a Smeal to Raise Pump? Yes Remarks     

For Maintenance: Need 4" x 2" flange and (1) fire hose.

Inspected By Mike Sowers Date Inspected August 4, 2004



# Peerless Midwest Inc. *Water Supply Contractors*

55860 Russel Industrial Parkway / Mishawaka, Indiana 46545 / 574-254-9050 / Fax 574-254 9650

## WELL & PUMP SERVICE INSPECTION REPORT

Owner Turkey Creek Regional Sewage District City Syracuse State IN

Location North of Well #1

Well No. 2 Date Drilled 1998 Dia. 12" Depth 78' Type Well Rotary

Screen ID. 12" Screen Length 15' Depth to Top of Screen 63' Type Screen Johnson SS

Dates of Cleaning \_\_\_\_\_

Phone (260) 856-4341 Person to Contact Val Duggins, Supt./Tim Woodward, Asst. Supt.

	DATE	STATIC	G.P.M.	PUMPING LEVEL	PRESSURE	SPECIFIC CAPACITY
ORIGINAL	1998	19.5'	302	33.08'		22.3
AFTER LAST CLEANING						
AFTER LAST TEST	2002	20.7'	290	36'	40#	18.9
PRESENT AT LINE PRESSURE	2003	17.9'	294	31.7'	40#	21.3

Test Completed Through Meter \_\_\_\_\_ Thread Size 4" Confined Space Entry? No

Motor HP 20 Make Franklin Volts 230 RPM 3450 Phase 3

Gear Drive - HP - Ratio - RPM Meter Required No

Pump Mfg. Crown Serial No. \_\_\_\_\_ Airline Length \_\_\_\_\_

Rated Capacity: 252 GPM 180' TDH Operating Pressure \_\_\_\_\_

Total Setting 62' Size of Packing Sub Date Installed 1998

Dates of Overhaul \_\_\_\_\_

### THE FOLLOWING IS TO BE PERFORMED DURING EACH INSPECTION

Is Check Valve Leaking? No Change Motor Oil & Grease Sub Repack Pump Sub Grease Pump Sub

Pump is Presently Delevoping 294 GPM 124' TDH Projected Curve Capacity 252 GPM 138' TDH

Shut Off Pressure 94 PSI Rated Shut Off Head 220 ft. Calculated Shut Off Head 235 ft.

Electrical Data (With Pump in Operation): 240 V 50.2 / 42.5 / 47.2 Amps 53.8 @ 240V Full Load Amps

Location of Power Lines Underground Can Electrical Box be Locked Out? \_\_\_\_\_

Distance From Top of Pump Pedestal to Grade \_\_\_\_\_ Materials Needed to Clean Well Pull pump, (2) hoses to tank, 40' to waste.

Need a Smeal to Raise Pump: Yes Remarks \_\_\_\_\_

Inspected By John Kollar Date Inspected August 12, 2003



# Peerless Midwest Inc. *Water Supply Contractors*

55860 Russel Industrial Parkway / Mishawaka, Indiana 46545 / 574-254-9050 / Fax 574-254 9650

## WELL & PUMP SERVICE INSPECTION REPORT

Owner Turkey Creek Regional Sewage District City Syracuse State IN

Location North of Well #1

Well No. 2 Date Drilled 1998 Dia. 12" Depth 78' Type Well Rotary

Screen ID. 12" Screen Length 15' Depth to Top of Screen 63' Type Screen Johnson SS

Dates of Cleaning \_\_\_\_\_

Phone (260) 856-4341 Person to Contact Val Duggins, Supt./Tim Woodward, Asst. Supt.

	DATE	STATIC	G.P.M.	PUMPING LEVEL	PRESSURE	SPECIFIC CAPACITY
ORIGINAL	1998	19.5'	302	33.08'		22.3
AFTER LAST CLEANING						
AFTER LAST TEST	2001	16.7'	302	33.2'	42#	18.3
PRESENT AT LINE PRESSURE	2002	20.7'	290	36'	40#	18.9

Test Completed Through Meter \_\_\_\_\_ Thread Size 4" Confined Space Entry? No

Motor HP 20 Make Franklin Volts 230 RPM 3450 Phase 3

Gear Drive - HP - Ratio - RPM Meter Required No

Pump Mfg. Crown Serial No. \_\_\_\_\_ Airline Length \_\_\_\_\_

Rated Capacity: 252 GPM 180' TDH Operating Pressure \_\_\_\_\_

Total Setting 62' Size of Packing Sub Date Installed 1998

Dates of Overhaul \_\_\_\_\_

### THE FOLLOWING IS TO BE PERFORMED DURING EACH INSPECTION

Is Check Valve Leaking? No Change Motor Oil & Grease Sub Repack Pump Sub Grease Pump Sub

Pump is Presently Delevoping 290 GPM 128' TDH Projected Curve Capacity 252 GPM 138' TDH

Shut Off Pressure NDA PSI Rated Shut Off Head 220 ft. Calculated Shut Off Head NDA ft.

Electrical Data (With Pump in Operation): 240 V 41 / 42 / 50 Amps 53.8 @ 240V Full Load Amps

Location of Power Lines Underground Can Electrical Box be Locked Out? \_\_\_\_\_

Distance From Top of Pump Pedestal to Grade \_\_\_\_\_ Materials Needed to Clean Well Pull pump, (2) hoses to tank, 40' to waste.

Need a Smeal to Raise Pump? Yes Remarks \_\_\_\_\_

Inspected By Doug Bloss Date Inspected 8/20/2002





# Peerless Midwest Inc. *Water Supply Contractors*

55862 Russel Industrial Parkway / Mishawaka, Indiana 46545 / 219-254-9050 / Fax 219-254 9650

## WELL & PUMP SERVICE INSPECTION REPORT

Owner Turkey Creek Regional Sewage District City Syracuse State IN

Location North of Well #1

Well No. 2 Date Drilled \_\_\_\_\_ Dia. \_\_\_\_\_ Depth 78' Type Well Rotary

Screen ID. 12" Screen Length 15' Depth to Top of Screen 63' Type Screen Johnson SS

Dates of Cleaning \_\_\_\_\_

Phone (219) 856-4341 Person to Contact Val Duggins, Supt./Tim Richmond, Asst. Supt.

	DATE	STATIC	G.P.M.	PUMPING LEVEL	PRESSURE	SPECIFIC CAPACITY
ORIGINAL	1998	19'6"	302	33'1"		22.3
AFTER LAST CLEANING						
AFTER LAST TEST	2000	19.5'	298	35.1'	42#	19.2
PRESENT AT LINE PRESSURE	2001	16.7'	302	33.2'	42#	18.3

Test Completed Through Meter \_\_\_\_\_ Thread Size 4" Confined Space Entry? No

Motor HP 20 Make Franklin Volts 230 RPM 3450 Phase 3

Gear Drive - HP - Ratio - RPM Meter Required No

Pump Mfg. Crown Serial No. \_\_\_\_\_ Airline Length \_\_\_\_\_

Rated Capacity: 252 GPM 180' TDH Operating Pressure \_\_\_\_\_

Total Setting 62' Size of Packing Sub Date Installed 1998

Dates of Overhaul \_\_\_\_\_

### THE FOLLOWING IS TO BE PERFORMED DURING EACH INSPECTION

Is Check Valve Leaking? No Change Motor Oil & Grease Sub Repack Pump Sub Grease Pump Sub

Pump is Presently Delevoping 302 GPM 130' TDH Projected Curve Capacity 252 GPM 160' TDH

Shut Off Pressure \* PSI Rated Shut Off Head \_\_\_\_\_ ft. Calculated Shut Off Head \_\_\_\_\_ ft.

Electrical Data (With Pump in Opertion): 240 V 44 / 44 / 52 Amps 53.8 @ 240V Full Load Amps

Location of Power Lines Underground Can Electrical Box be Locked Out? \_\_\_\_\_

Distance From Top of Pump Pedestal to Grade \_\_\_\_\_ Materials Needed to Clean Well Pull pump, (2) hoses to tank, 40' to waste.

Need a Smeal to Raise Pump? Yes Remarks \*No churn taken.

Inspected By Doug Bloss Date Inspected October 23, 2001



# Peerless Midwest Inc. *Water Supply Contractors*

55862 Russel Industrial Parkway / Mishawaka, Indiana 46545 / 219-254-9050 / Fax 219-254 9650

## WELL & PUMP SERVICE INSPECTION REPORT

Owner Turkey Creek Regional Sewage District City Syracuse State IN

Location North of Well #1

Well No. #2 Date Drilled \_\_\_\_\_ Dia. \_\_\_\_\_ Depth 78' Type Well Rotary

Screen ID. 12" Screen Length 15' Depth to Top of Screen 63' Type Screen Johnson SS

Dates of Cleaning \_\_\_\_\_

Phone (219) 856-4341 Person to Contact Val Duggins, Supt./Tim Richmond, Asst. Supt.

	DATE	STATIC	G.P.M.	PUMPING LEVEL	PRESSURE	SPECIFIC CAPACITY
ORIGINAL	1998	19'6"	302	33'1"		22.3
AFTER LAST CLEANING						
AFTER LAST TEST						
PRESENT AT LINE PRESSURE	2000	19.5'	298	35.1'	42#	19.2

Test Completed Through Meter \_\_\_\_\_ Thread Size 4" Confined Space Entry? No

Motor HP 20 Make Franklin Volts 230 RPM 3450 Phase 3

Gear Drive - HP - Ratio - RPM Meter Required No

Pump Mfg. Crown Serial No. \_\_\_\_\_ Airline Length \_\_\_\_\_

Rated Capacity: <sup>252</sup>~~300~~ GPM 180' TDH Operating Pressure \_\_\_\_\_

Total Setting 62' Size of Packing Sub Date Installed \_\_\_\_\_

Dates of Overhaul \_\_\_\_\_

### THE FOLLOWING IS TO BE PERFORMED DURING EACH INSPECTION

Is Check Valve Leaking? No Change Motor Oil & Grease Sub Repack Pump Sub Grease Pump Sub

Pump is Presently Delevoping 298 GPM 132' TDH Projected Curve Capacity \_\_\_\_\_ GPM \_\_\_\_\_ TDH

Shut Off Pressure \_\_\_\_\_ PSI Rated Shut Off Head \_\_\_\_\_ ft. Calculated Shut Off Head \_\_\_\_\_ ft.

Electrical Data (With Pump in Opertion): 240 V 44 / 43 / 52 Amps 53.8 Full Load Amps

Location of Power Lines Underground Can Electrical Box be Locked Out? \_\_\_\_\_

Distance From Top of Pump Pedestal to Grade \_\_\_\_\_ Materials Needed to Clean Well Pull pump, (2) hoses to tank, 40' to waste.

Need a Smeal to Raise Pump? Yes Remarks Pull pump, (2) hoses to tank, 40' to waste.

Inspected By Doug Bloss

Date Inspected October 31, 2000



# Peerless Midwest Inc.

Water Supply Contractors

55860 Russell Industrial Parkway / Mishawaka, Indiana 46545 / 574-254-9050 / Fax 574-254-9650

505 Apple Tree Drive / Ionia, Michigan 48846 / 616-527-0050 / Fax 616-527-5508

17110 Westfield Park Dr., Westfield, IN 46074 / 317-896-2987 / Fax 317-896-3748

PAGE 1 OF 1

## WELL CLEANING

Our Job No. 19292 Date Started 10-18-04

Customer No. \_\_\_\_\_ Date Finished 10-21-04

Owner Turkey Creek Regional Sewage District City Syracuse State IN

Well No. 2 Location North of Well #1 in Field

Dia. 12" Depth 78' Screen 15' of SSWW Type Well Rotary

Dates of Cleaning \_\_\_\_\_

Pump Mfg. \_\_\_\_\_ Test Pump \_\_\_\_\_ Serial No. \_\_\_\_\_ GPM \_\_\_\_\_ TDH \_\_\_\_\_

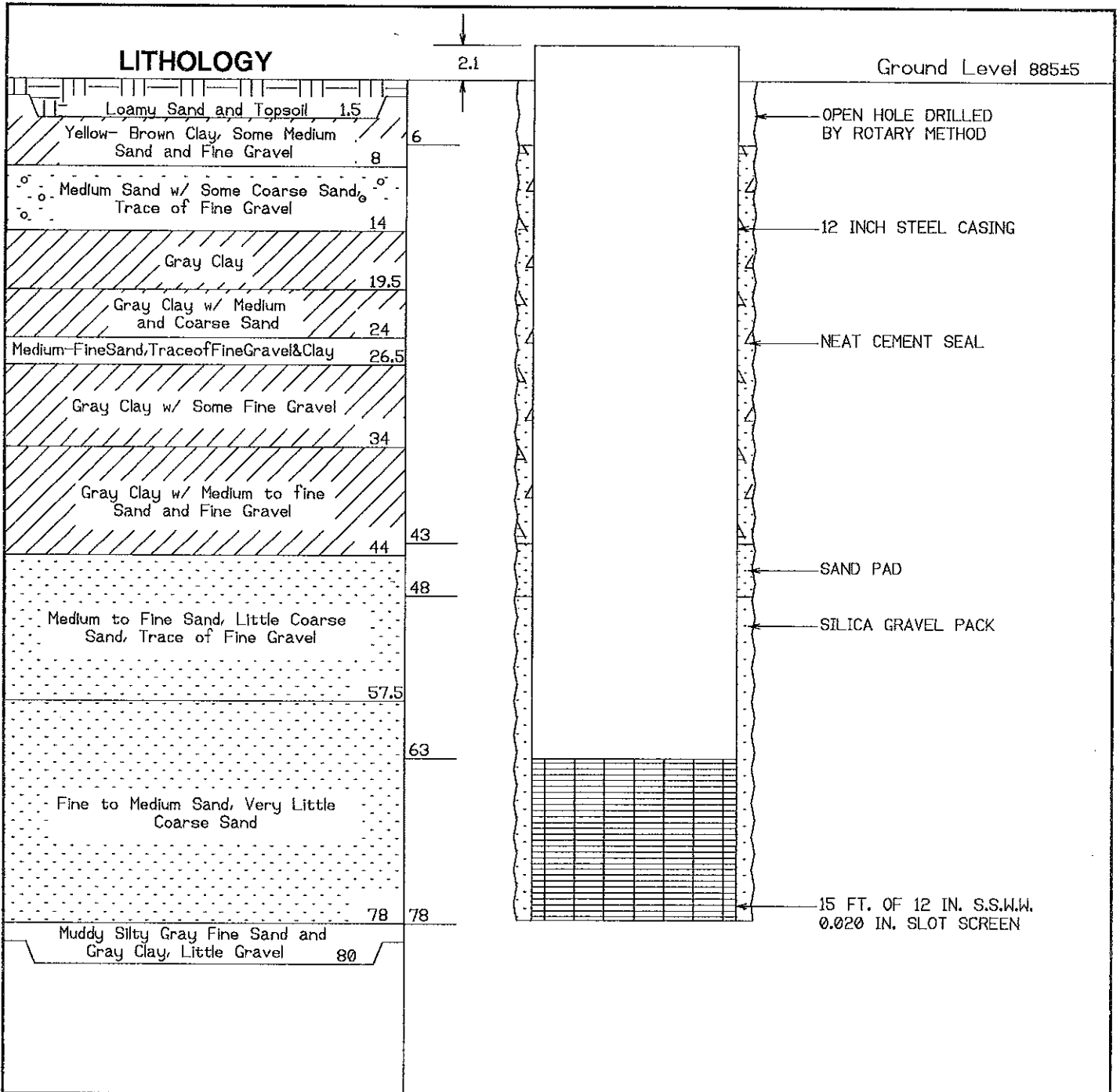
	Date	Static	GPM	Pumping Level	Pump Pressure	Specific Capacity
Original Performance	1998	19'5"	302	33.08		22.8
Test Before Cleaning	10/18/2004	20'	252	34'	Test Pump	18.0
Test After Cleaning	10/21/2004	20'	252	32.5'	Test Pump	20.1

### \* Used Test Pump

Date	Static	GPM	Pumping Level	Pump Pressure	Specific Capacity	Type Treatment
10/18/2004						Put Sulfamic, Aqua-Clear, and Wetting Agent in for Night.
10/19/2004	20'	252	33.5'	Test Pump	18.6	Pumped Sulfamic Acid Out, Surged. Put Acid in, Surged in Tank
	20'	252	33.5'	Test Pump	18.6	Pumped Acid Out, Surged. Put Neutralizer, Caustic in Well.
	20'	252	33.5'	Test Pump	18.6	Pumped Neutralizer and Caustic Out. Rahide Well. Put Sulfamic with P-6, Wetting Agent Overnight.
10/20/2004	20'	252	33.5'	Test Pump	18.6	Pumped Sulfamic & P-6 Out, Surged. When pumping P-6 and Liquichlor out, was real dirty (real fine sand for about 1/2 hour).
						Put P-6, Liquichlor, Wetting Agent in - Overnight Pump P-6 & Liquichlor Out
	20'	252	33.5'	Test Pump	18.6	Pumped P-6 & Liquichlor Out (Real Dirty) Put Liquichlor in Overnight
10/21/2004	20'	252	42.5'	Test Pump	20.1	Pumped Liquichlor Out, Surged

### CHEMICALS REQUIRED

Sodium  
 Tripolyphosphate 100 lbs.      HCL Acid 110 gal.      Dry Chlorine - lbs.      Caustic 20 lbs.  
 Sodium  
 Bicarbonate 100 lbs.      Citric Acid - lbs.      Potassium Permanganate - lbs.  
 Sodium  
 Hypochlorite 55 gal.      Wetting Agent 2 gal.      Others 400 Gal Sulfamic Acid / 5 Gal Aqa-Clear  
 Inhibitor 1 qts.      Defoamant 1 qts.      Foreman Brad Armour



City Cromwell State Indiana

Well Location 220' North of Well #1 and 1,800' West of East County Line Road

County Kosciusko Twp. Turkey Creek T. 34N R. 7E SE  $\frac{1}{4}$  SW  $\frac{1}{4}$  SE  $\frac{1}{4}$  12

Test Rate 298 GPM

Static Water Level 19 Ft.

Pumping Level 33.1 Ft.

Specific Capacity 22.3 GPM/Ft. D.D.

Driller Others

Date Drilled 06/06/98 Job No. \_\_\_\_\_

Well No. 2

Turkey Creek Regional Sewer District  
Syracuse, Indiana



**PEERLESS-MIDWEST, INC.**

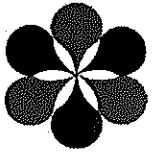
65860 Russel Industrial Pkwy, Mishawaka, IN 46545  
Water Supply Contractors

# TURKEY CREEK REGIONAL SEWAGE DISTRICT SYRACUSE, INDIANA

## HISTORY OF WELL #2

- 1998 Drilled new 18" x 12" gravel wall well. Total depth was 78' using 15' of stainless steel, wire wound screen. Static water level was 19.5'. Pumped 302 GPM @ 33.08' pumping level for a specific capacity of 22.3.
- 2004 Pulled pump and installed vertical turbine test pump. Cleaned well conventionally. Started with a specific capacity of 18.6 and ended with 20.1. Pumped 252 GPM @ 32.5' pumping level.



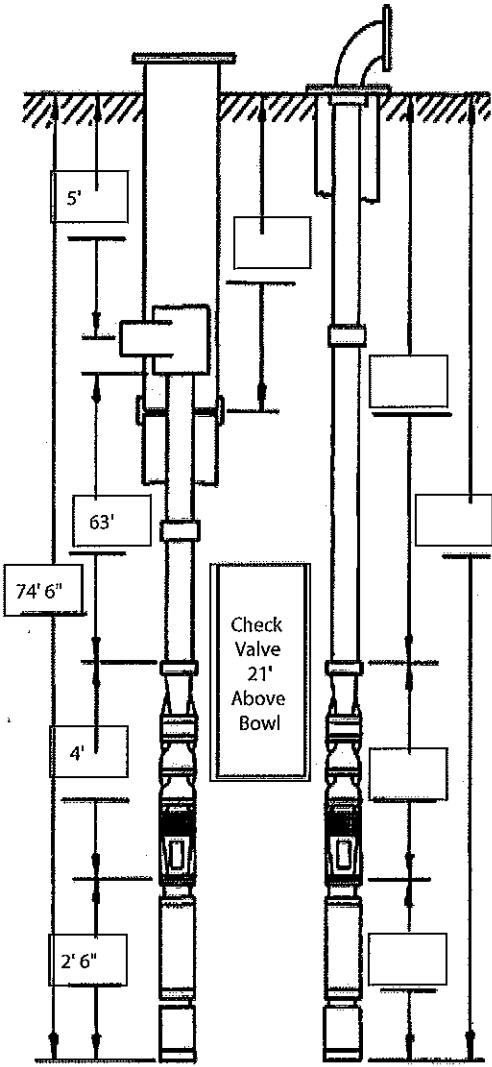


**SUBMERSIBLE PUMP INSTALLATION REPORT**

Sales Order # 24165 Well No. 2 Date: 7-16-10

Owner Turkey Creek Regional Sewage Dist. City Cromwell State IN

Location of Well North of water plant in field.



<u>PUMP</u>		<u>PUMP DISCHARGE</u>	
Manufacturer	Grundfos	Pitless Mfr.	Baker
Serial No.	00011 PPEWP	Pitless Model #	NDA
<u>MOTOR</u>		Pitless Size	12"
Manufacturer	Franklin	Discharge Elbow	4"
Horsepower	20	Flange Size	4"
RPM	3450	Threaded Tee	N/A
Diameter	6"	Tee Size	N/A
Serial No.	23660490	Sanitary Seal	N/A
Phase	3	<u>MONITOR SYSTEMS</u>	
Voltage	230	Airline/Type	None/Transducer
Full Load Amps	53.8	Airline Length	N/A
SF Amps	60.6	Stilling Tube	N/A
Service Factor	1.15	Tube Length	N/A
Cable Size/Length	2 AWG	<u>PUMPING DATA</u>	
Flat/Twisted	Flat	Static Water Level	27.4'
<u>BOWL</u>		Pressure	62#
Manufacturer	Grundfos	GPM	280
Model No.	230S200-5	Pumping Level	43'
Size	5"	Test Duration	1/2 Hour
No. Stages	5	Volts	230
Material	SS	Amps	54/51/51
Discharge Size	4"	<u>WELL</u>	
<u>COLUMN</u>		Type	Rotary
Pipe Size	4"	Depth	79' 6"
Black/Galvanized	Black	Casing Dia.	12"
Check Valve Type	Simmons	Casing Length	73' 6"
Check Valve Size	4"	Well Vent	No
Ft. Above Bowl	21'		

Remarks 42' of 4" column replaced at this time. 4" check valve replaced 21' above bowl.  
Pump end replaced. Rated 250 GPM @ 198' TDH.

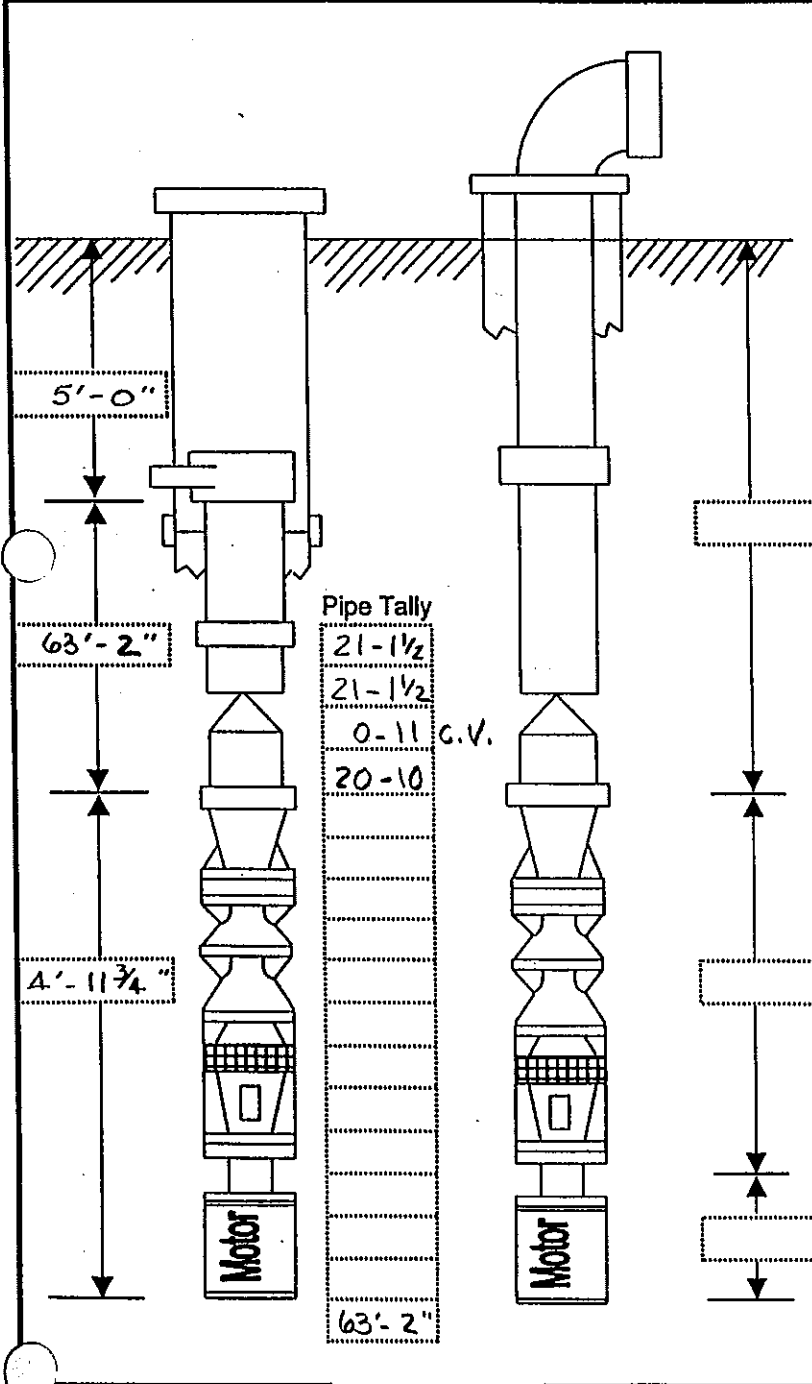
Installer(s) Gary Wickizer / Jim Britton

# Layne Northern Company

a division of Layne Christensen Company  
Lansing & Edwardsburg, Michigan

## SUBMERSIBLE PUMP INSTALLATION REPORT

Well No.	2	Owner	Turkey Creek RSD	Date	9/1/98
Job No.	63-1832	City	Cromwell	Pump No.	2
Location of Well	220' N. of Pump House			State	Indiana



MOTOR		PUMP DISCHARGE	
Manufacture	Franklin	Pitless Adapter	<input checked="" type="checkbox"/> Yes
Horsepower	20	Pitless adap. size	12 x 6
Serial Number	23660490	Manufacturer	Baker
Phase	3	Discharge elbow	<input type="checkbox"/> Yes
Voltage	230	Flange Size	
Full Load Amps.	53.8	Thread Size	6" x 4"
S.F. Amps	60.6	Tee	<input type="checkbox"/> Yes
Service Factor	1.15	Thread Size	4"
RPM	3450	MONITOR SYSTEMS	
Diameter	6"	Airline	<input type="checkbox"/> Yes
Shaft Projection		Airline type	<input type="checkbox"/> plastic
BOWL		Airline type	<input type="checkbox"/> metal
Manufacture	Crown	Airline Length	
Model	6HS-300	Airline Fastener	
Size	6"	Stilling tube	<input type="checkbox"/> Yes
No. Stages	3	Tube Material	
Material	G.I.	Tube Length	
Discharge Size	4"	PUMPING DATA	
COLUMN		Static Water Level	20'
Pipe Size	4"	System Pressure	
Black	<input checked="" type="checkbox"/> Yes	gpm @ sys. psi	
Galvanized	<input type="checkbox"/> Yes	Pumping Level	
Check Valve	<input checked="" type="checkbox"/> Yes	Test Minutes	
Valve Type	Flomatic	WELL TYPE	
Valve Size	4"	Casing Dia.	12"
Ft. above bowl	20'	Well Depth	79'
CABLE		Sanitary Seal	<input checked="" type="checkbox"/> Yes
Size	4	Well Vented	<input checked="" type="checkbox"/> Yes
Length	80'		
Flat	<input checked="" type="checkbox"/> Yes		
Twisted	<input type="checkbox"/> Yes		
With Ground	<input checked="" type="checkbox"/> Yes		

Settings 0

REMARKS: Equipped w/ transducer  
Set to 62'

INSTALLER: T. Giles

FOR SERVICE CALL 1-800-535-1297 (Lansing)  
or 1-800-835-1530 (Edwardsburg)

**SUBMERSIBLE PUMP INSTALLATION REPORT**

Sales Order No. 19292 Date 10-21-04

Pump Mfg. CROWN MODEL GHS-300 Well No. 2

Owner Turkey CREEK R.S.D. City CROMWELL State IN

Location of Well NORTH OF WELL 1 IN Field

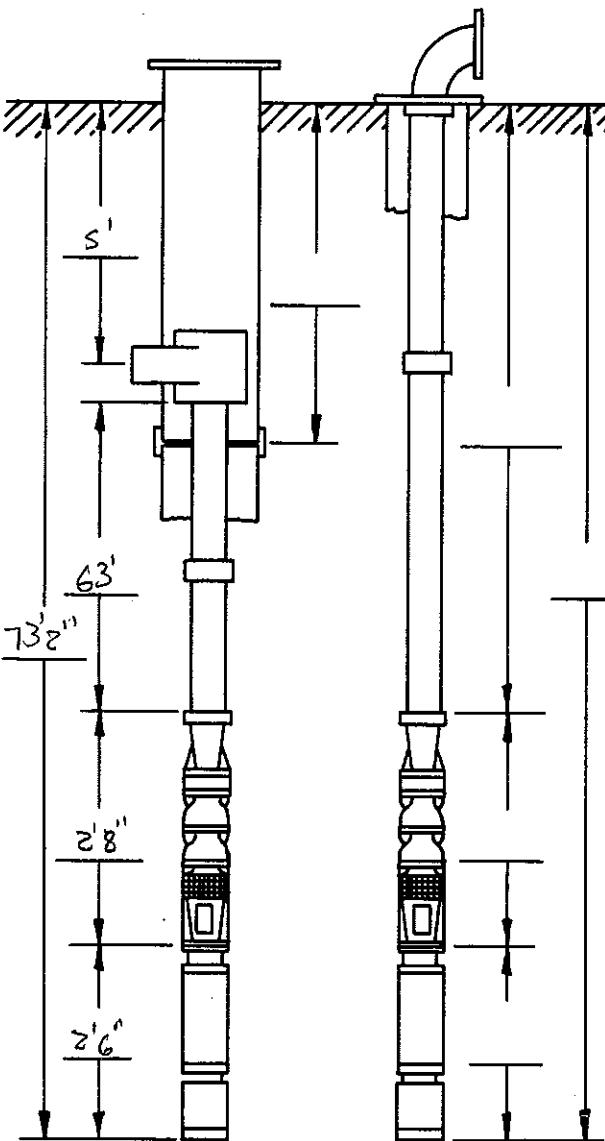
MOTOR: Make FRAKLIN Dia. 6" Frame \_\_\_\_\_ Serial No. 2366490

Hp 20 Volts 230 Phase 3 Cycles 60 RPM 3450

Full Load Amps 53.8 Service Factor 1.15 S.F. Amps 60.6

STARTER: Make \_\_\_\_\_ Size \_\_\_\_\_ Type \_\_\_\_\_

CONTROL: Make \_\_\_\_\_ Type \_\_\_\_\_ Range \_\_\_\_\_ To \_\_\_\_\_ lbs.



PUMP DISCHARGE: Mfg. BAKER Model \_\_\_\_\_

Flanged Elbow \_\_\_\_\_ Pitless Adapter X

Pitless Tank None Tank Capacity N/A gal.

Discharge Pipe Size 4 " Column Conn. Size 4 "

Adapter Connected to Well Casing 5' " below ground with \_\_\_\_\_

COLUMN: Pipe Size 4 " Black X Galv. \_\_\_\_\_

Column Check Valve Type 4 " located 21 " above bowl

Air Line Length NONE ' located \_\_\_\_\_ "

Air Intake Valve Type \_\_\_\_\_ located \_\_\_\_\_ " below ground.

PUMP BOWL: Type CROWN Dia. 6" Stages 3

CABLE: Size 2 AWG Length 78'

WELL: No. 2 Type Rotary Dia. 12" Depth 79' 16"

PUMPING TEST: GPM 252 Pumping Level 3 3/2 ' Static Level 20' Specific Capacity 20.1 GPF

PSI 55<sup>th</sup> Volts 246 Amps: 44 45 49

FOUNDATION: 1'7" above ground level

REMARKS: This WELL HAS a Transducer in it. Column is Strapped

19292 B

BRAD ARMOUR Installer



## TURKEY CREEK REGIONAL SEWAGE DISTRICT SYRACUSE, INDIANA

### HISTORY OF CROWN/GRUNDFOS PUMP (WELL #2)

- 1998 Installed new 3-stage submersible Crown pump with 20 HP motor. Rated 252 GPM @ 180' TDH.
- 2004 Had to pull pump to clean well. All column was replaced. New motor lead and power cable. Bowl was getting soft, but will go another service cycle.
- 2010 Pulled submersible pump and motor. Replaced pump end with new Grundfos 230S200-5, 42' of 4" column pipe and a 4" check valve. New Rating 250 GPM @ 198' TDH.



# 6 H-300

Well no. 2

## MODEL 6 H-300 PERFORMANCE CHARACTERISTIC

BOWL — CAST IRON ~~OF NY-RESIST~~ — DIA. 6"  
 IMPELLER BRONZE ~~OF NY-RESIST~~  
 DISCHARGE 4" STANDARD  
 K FACTOR 2.8  
 MAX. O.D. W/CABLE GUARD 6 3/4"  
 BEARING — ~~OUTLESS RUBBER OR~~ BRONZE

CHANGE EFFICIENCY AS FOLLOWS	
No. of Points	No. of Stages
-3	1
-2	2
-1	3
0	4

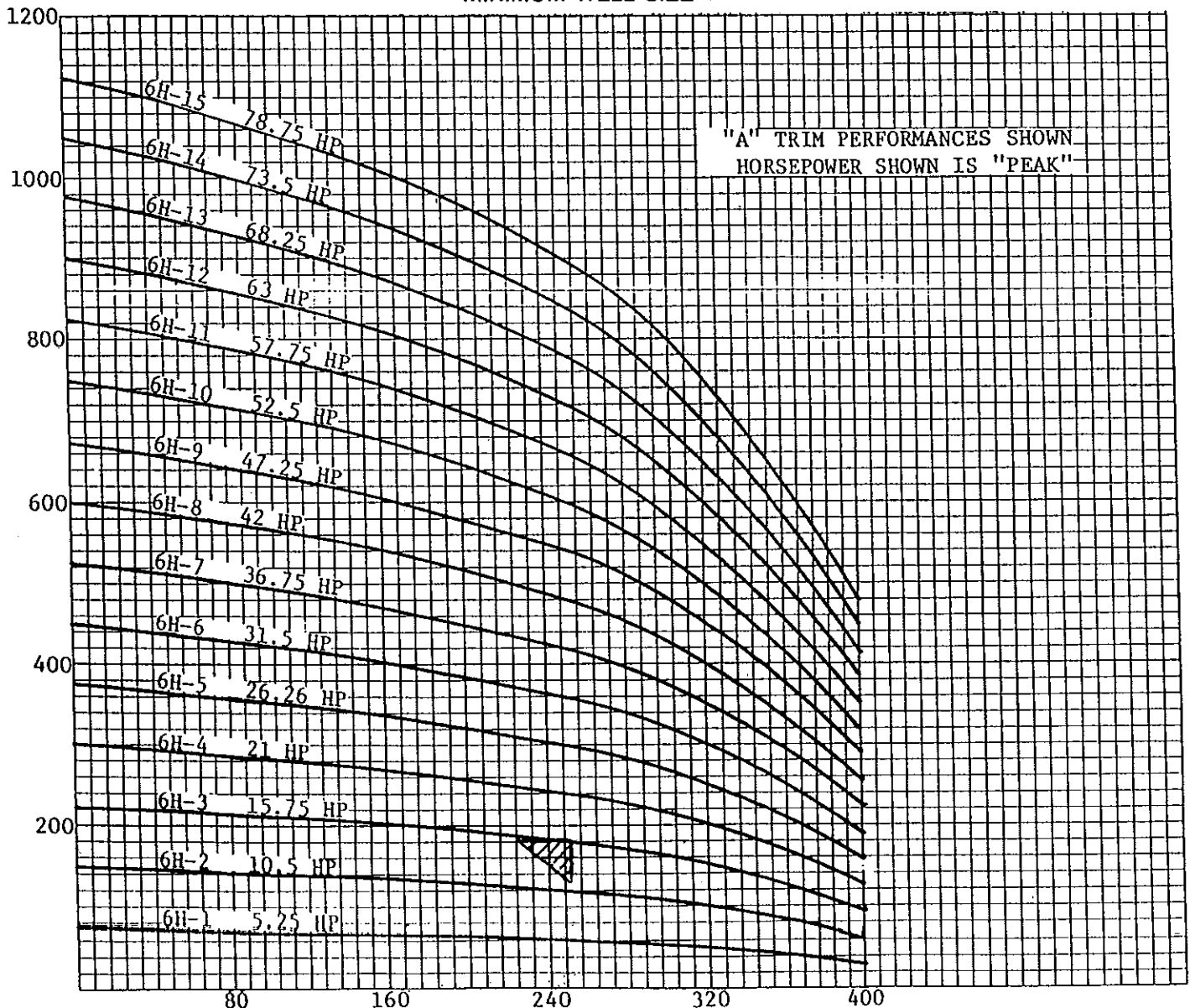
POWER: ELECTRIC  
 CYCLE: 60 Hz  
 R P M: 3450  
 IMPELLER TYPE: ENCLOSED  
 BOWL TYPE: FLANGED  
 CURVE SHEET NO. 1

**NOTE:** EFFICIENCY PERFORMANCE BASED ON CAST IRON ENAMELED BOWLS — POLISHED BRONZE IMPELLERS AND 6 FEET SUBMERGENCE.

THIS CHARACTERISTIC CURVE IS BASED ON FACTORY TESTS WHEN PUMPING CLEAR, FRESH, NON-AERATED WATER AT A TEMPERATURE NOT EXCEEDING 85° F. AND UNDER SUCTION CONDITIONS AS INDICATED.

PUMP PERFORMANCE RATING IS FOR THE DESIGNATED POINT ONLY AND IS SUBJECT TO TEST TOLERANCES AND PROCEDURES AS SPECIFIED IN THE STANDARD OF THE HYDRAULIC INSTITUTE.

MINIMUM WELL SIZE 7"



*8000/5000*

U.S. GALLONS PER MINUTE



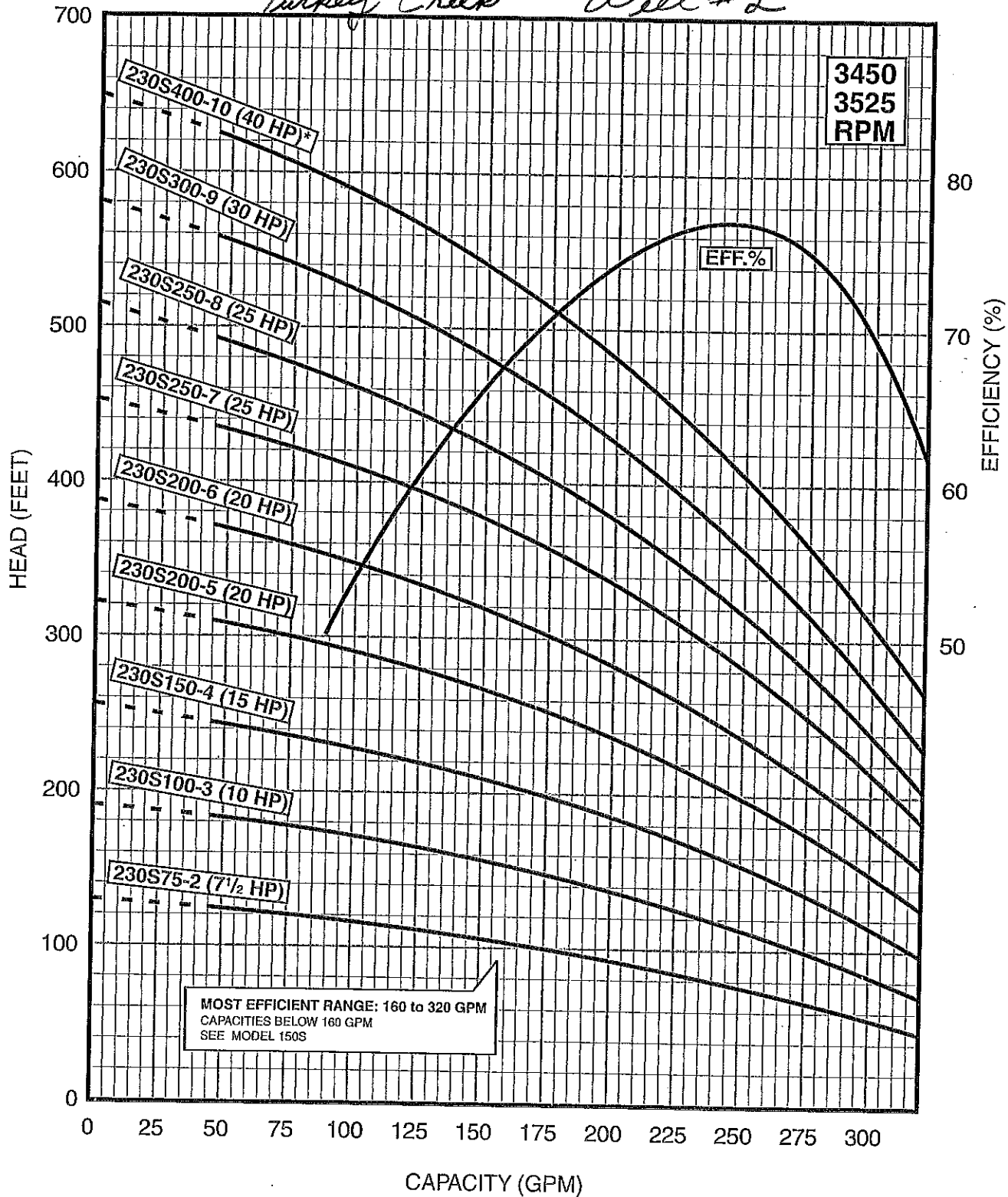
CROWN PUMP CORPORATION • HIGHWAY 16 & BIVAR • DE LEON, TEXAS

FLOW RANGE: 160 -320 GPM

OUTLET SIZE: 3" NPT

NOMINAL DIA. 6"

*Turkey Creek Well #2*



SPECIFICATIONS SUBJECT TO CHANGE WITHOUT NOTICE.

4" MOTOR STANDARD, 7.5 HP/3450 RPM

6" MOTOR STANDARD, 10-60 HP/3450 RPM.

8" MOTOR STANDARD, 75 HP/3525 RPM.

\* Alternate motor sizes available.

Performance conforms to ISO 2548 Annex B @ 8 ft. min. submergence.